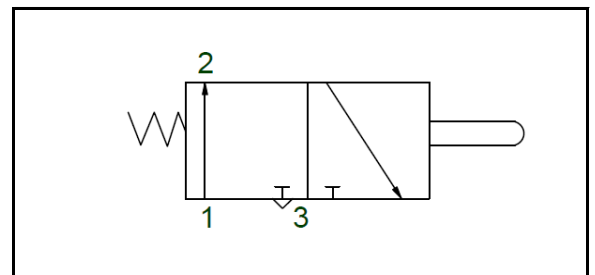


### Specifications

Part no.	14700575	
Mounting	On cylinder	
Max. working pressure	10	bar
Air tube size	Ø6	mm
Temperature range min/max	-40 / +80	°C
Weight	0.7	kg
Stroke	30	mm
Bolt adjustment length	20	mm

### Pneumatic symbol



### Part list

Included with knock off	Qty
Mounting kit:	-
- Hex bolt M6x50	3
- Washer M6	3
- Nyloc Nut M6	3
- Spring washer M6	3
- Ty raps	3
Air tube with filter	1

### Spare parts

Item no.	Description	Qty
14700576	Mounting kit	1
14700577	Seal kit	1
14810566	Air coupling 90 degrees - Ø6 mm	1

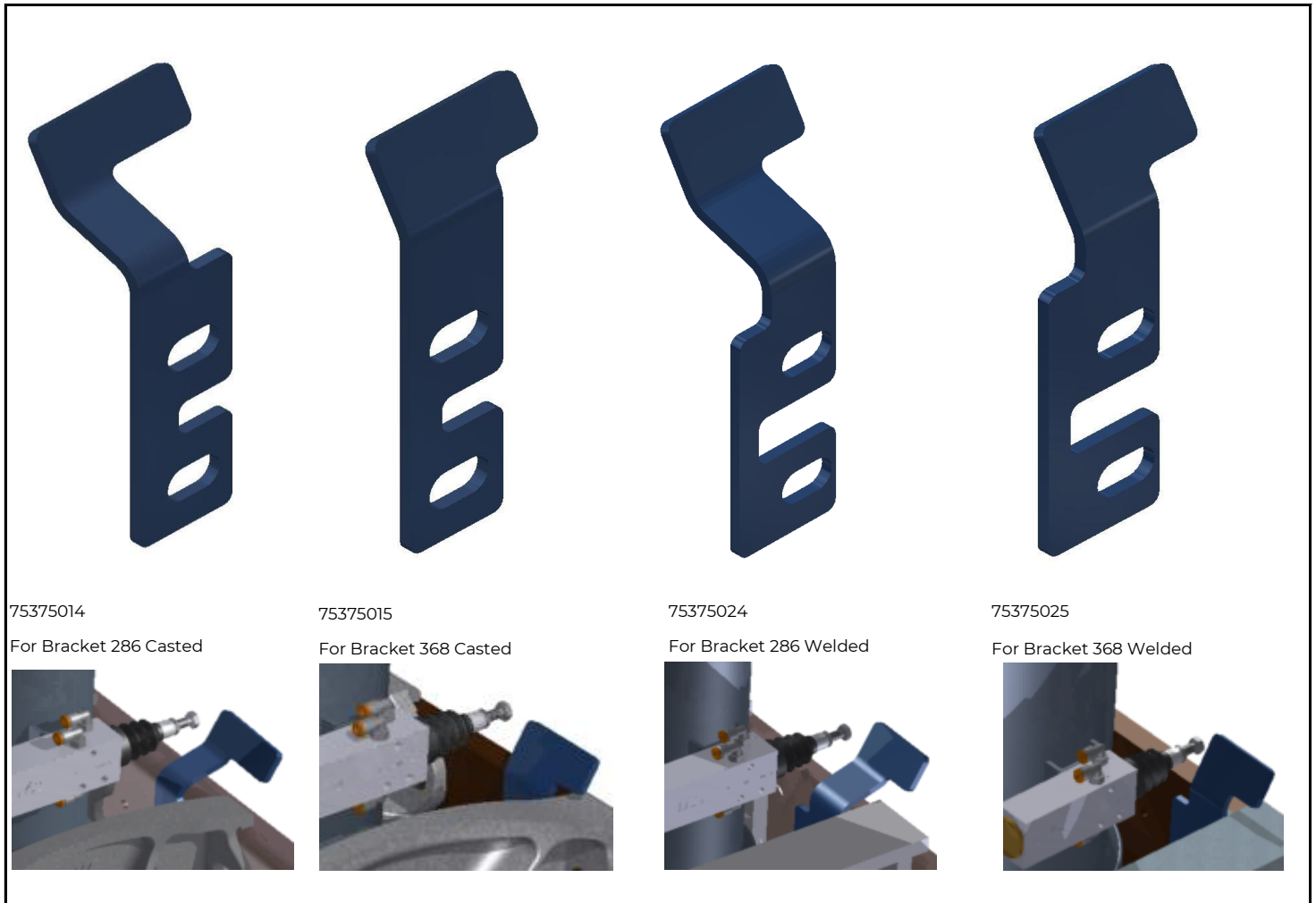
### Technical notes

Make sure inlet air is dry and clean

### Related documentation

Mounting instructions: KNO-0021

Repair instructions: KNO-0007



## Application

Item no.	Description	Bracket Type	Width	Weight (kg)	Material	Kit no.incl.KO valve
75375014	Stop plate	Casted	286	0.49	S235 JR EN10025-2	14700579
75375015	Stop plate	Casted	368	0.50	S235 JR EN10025-2	14700578
75375024	Stop plate	Welded	286	0.49	S235 JR EN10025-2	14700581
75375025	Stop plate	Welded	368	0.44	S235 JR EN10025-2	14700580

## Technical notes

Make sure washers are positioned over slotted holes of the stop plate • The stop plate should be mounted on the inner side of the bracket • Item is zinc plated conforming to the 480 hours neutral salt spray test as per ISO 9227 (ISO 10289, rating 9)

## Related documentation

Mounting instructions: KNO-0021

Chassis bracket spec sheets: 015BRA10 & 015BRA15