

HYVA GEAR PUMPS



EXTERNAL GEAR TYPE

Hyva

gear pump type :

gear pump 133L - BI - 4H

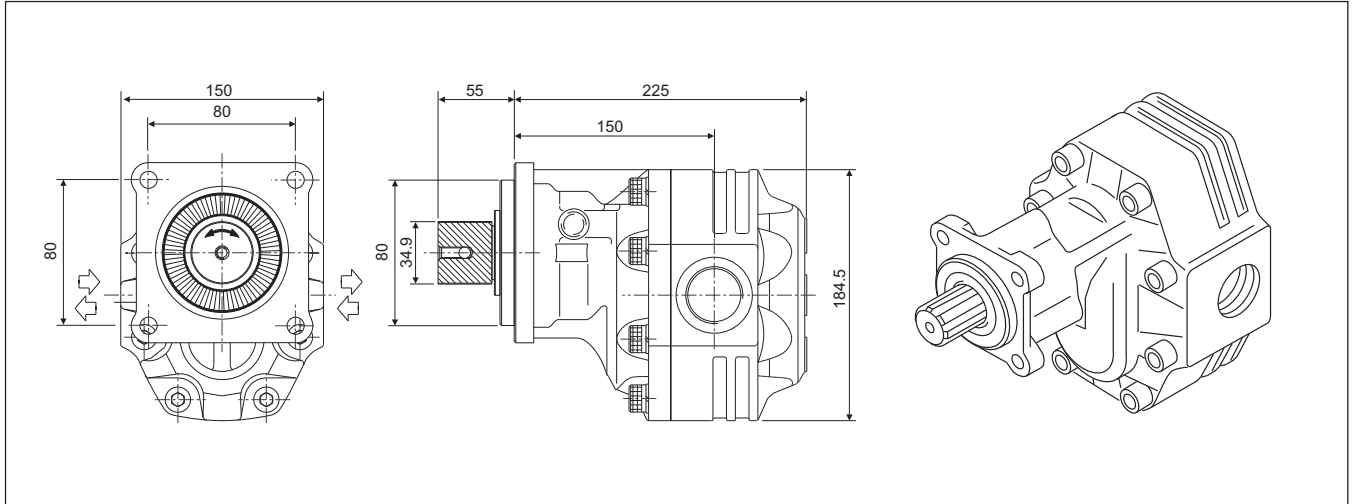
part number :

145 62 795

page # 1 / 2

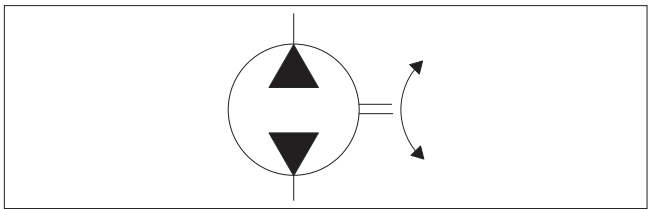
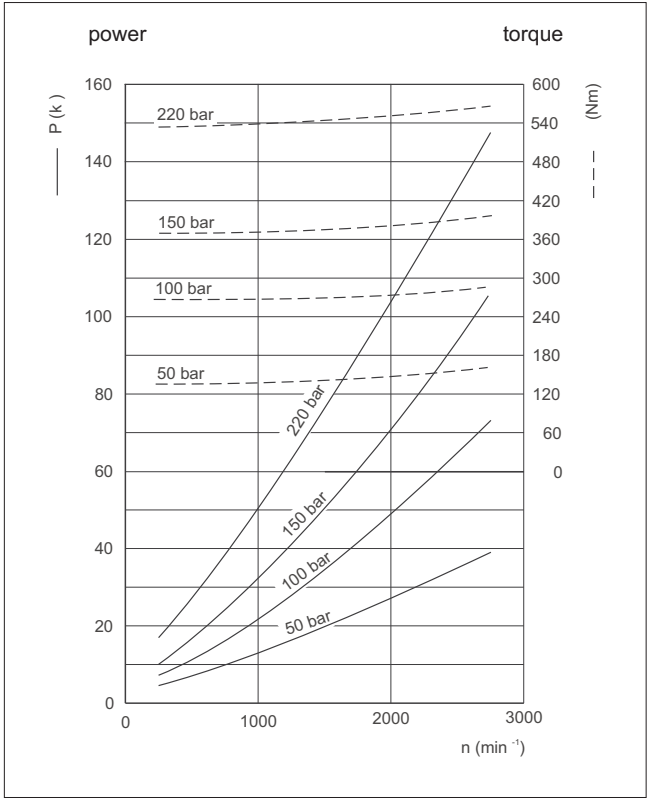
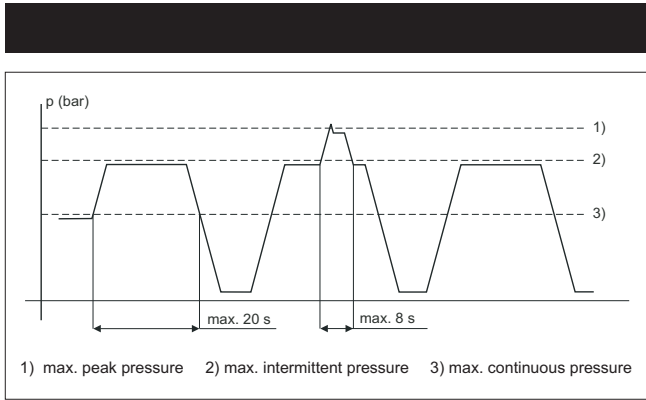
rotation :

bi-rotational



displacement per revolution	:	133,09	cm ³
maximum peak pressure	:	260	bar
maximum intermittent pressure	:	250	bar
maximum continuous pressure	:	220	bar
maximum speed without load	:	4000	min ⁻¹
max. speed at intermittent press.	:	2500	min ⁻¹
min. speed at intermittent press.	:	300	min ⁻¹
oil temperature range	:	-25 ⇄ 110	°C
inlet pressure range (suction side)	:	0,7 ⇄ 3	bar (abs)
recommended oil viscosity range	:	12 ⇄ 100	mm ² /s (cSt)
maximum starting viscosity	:	750	mm ² /s (cSt)
filtration :			
- working pressure < 200 bar	:	25	µm
- working pressure > 200 bar	:	10	µm
connection :			
- inlet - straight internal thread	:	1,5	" B.S.P.
- outlet - straight internal thread	:	1,5	" B.S.P.
minimum suction hose bore diameter	:	2	inch
shaft DIN 5462	:	8*32*36	mm
mass	:	25,3	kg
noise level at 900 min ⁻¹ and 100 bar	:	70,9	dB(A)
noise level at 1500 min ⁻¹ and 100 bar	:	73,4	dB(A)

efficiency diagram on request



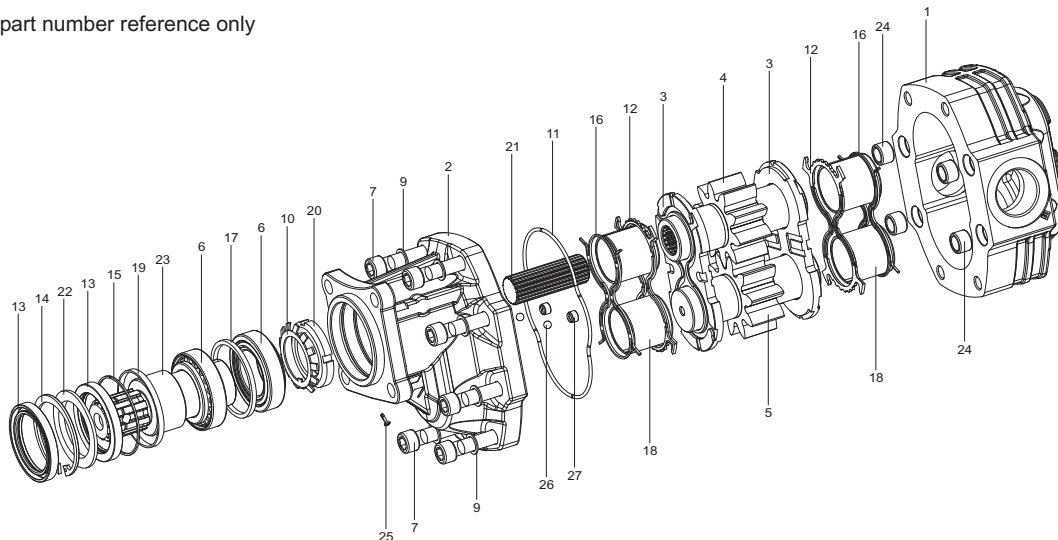
HYVA GEAR PUMPS



EXTERNAL GEAR TYPE

Hyva	gear pump type :	gear pump 133L - BI - 4H
page # 2 / 2	part number :	145 62 795
	rotation :	bi-rotational

drawing for part number reference only



pos.	code no.	description	qty.
1	145 62 795 01	body	1
2	145 62 795 02	front cover	1
3	022 59 375	thrust plate	2
4	145 62 795 04	drive gear	1
5	145 62 795 05	driven gear	1
6	145 62 795 06	roller bearing	2
7	145 62 795 07	screw	8
9	145 62 795 09	washer	8
10	145 62 795 10	lock washer	1
11	145 62 795 11	housing seal	1
12	145 62 795 12	seal	2
13	145 62 795 13	shaft seal	2
14	145 62 795 14	circlip	1
15	145 62 795 15	locking ring	1
16	145 62 795 16	back-up ring	2
17	145 62 795 17	spacer	1
18	145 62 795 18	sleeve bearing	4
19	145 62 795 19	spacer for cover	1
20	145 62 795 20	threaded locking ring	1
21	145 62 795 21	spline shaft	1
22	145 62 795 22	back-up washer	1
23	145 62 795 23	support shaft	1
24	145 62 795 24	steel bushes	4
25	145 62 795 25	protection plug	1
26	145 62 795 26	ball	2
27	145 62 795 27	valve	2
	024 60 095	seal kit complete (comprises 11, 12, 13, & 16)	1

The mentioned data on page 1 is for mineral based oil.
For other fluids, please contact our engineering dept.

The filtration as mentioned is for tippers only. For different applications we advise filtration according ISO 4406 class 17/14.

To avoid cavitation, the suction hose must be kept as short and straight as possible, and the minimum oil level in the oil tank must be above the inlet of the pump.