

HYVA CYLINDER

714 37 973



type: UME 191-6-3820-K345-60-3/4"-H65-HC

tipping weight: 20-37 ton

page # 1 / 1

Stage diameters 191 169 149 129 110 91	front view cylinder		<table border="0"> <tr><td>A</td><td>245</td></tr> <tr><td>ØC</td><td>215</td></tr> <tr><td>G¹</td><td>910</td></tr> <tr><td>I</td><td>520</td></tr> <tr><td>K¹</td><td>345</td></tr> <tr><td>H¹</td><td>82</td></tr> <tr><td>N</td><td>45</td></tr> <tr><td>ØP</td><td>107</td></tr> <tr><td>ØY</td><td>65,5</td></tr> <tr><td>S</td><td>531</td></tr> <tr><td>ØW</td><td>60</td></tr> <tr><td>X</td><td>45</td></tr> </table>	A	245	ØC	215	G¹	910	I	520	K¹	345	H¹	82	N	45	ØP	107	ØY	65,5	S	531	ØW	60	X	45
A	245																										
ØC	215																										
G¹	910																										
I	520																										
K¹	345																										
H¹	82																										
N	45																										
ØP	107																										
ØY	65,5																										
S	531																										
ØW	60																										
X	45																										

¹including 20 mm pull-out [tol. -5; +30 mm]

²cylinder is delivered including oil inlet swivel adapter

specifications

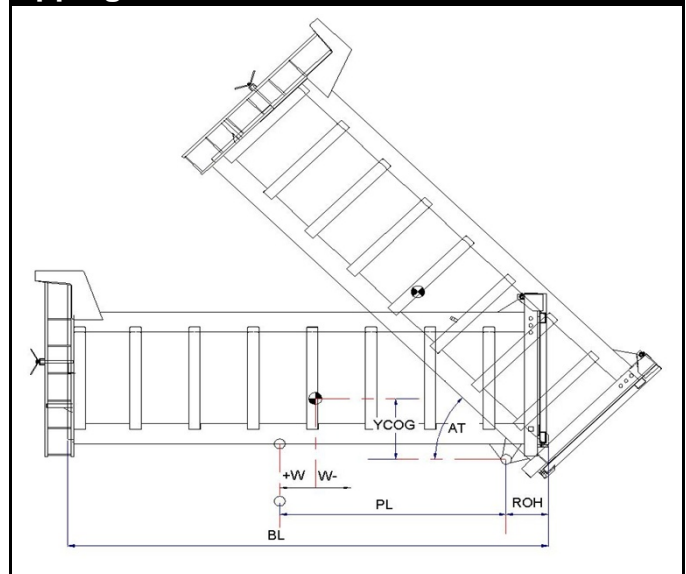
total stroke ¹	3820 mm
dry weight cylinder only	172 kg
total volume	67,0 L
working volume	62,1 L
maximum pressure	220 bar
maximum pump flow	98 l/min
maximum allowable thrust first stage ³	30,0 ton
oil inlet	3/4" BSP

technical notes

This cylinder is a lifting device only and may not be used as a structural member or be subjected to side load. Sideload and/or poor alignment might result in cylinder leakage. Hyva therefore strongly recommends the use of a cradle, even in instances where the cylinder only tips to the rear or to the side. The cylinder is painted black RAL9005. For suitable hydraulic oils, please refer to data sheet OIL-0011. For details of available brackets and cradles, please refer data sheet 015BRA06. Detailed calculations can be made using the HYVA Tipper Program, freely available from tipper.hyva.com.

³The cylinder thrust on the first stage (from the HYVA Tipper Program) must not exceed the maximum allowable (see specifications above).

tipping view



tipping weight

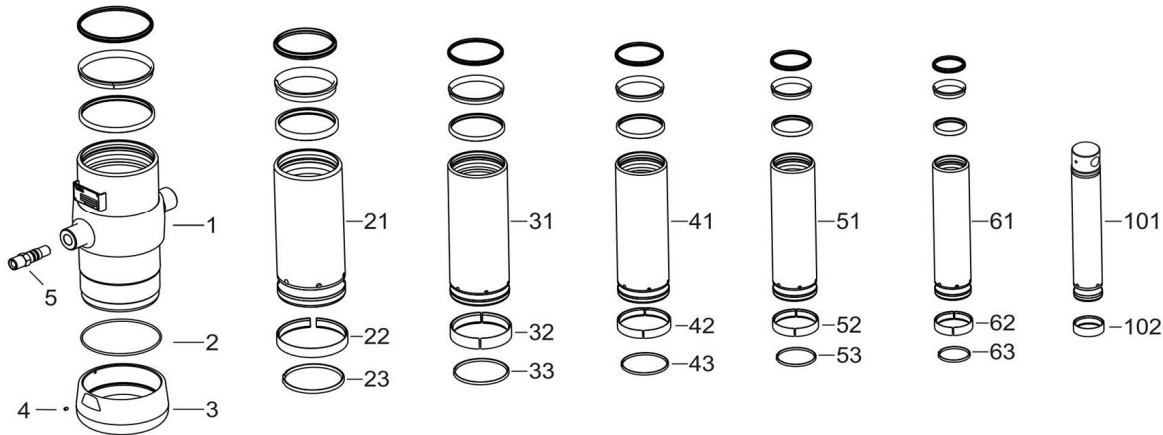
PL	4980			mm	4410		
YCOG	700			mm	700		
ROH	700			mm	700		
BL	11360	10330	9470	mm	10220	9290	8520
CYL w.r.t. COG (W)	0	520	950	mm	0	460	850
	Tipping weight for full stroke of 46°				Tipping weight for full stroke of 52°		
Tipping weight	20	22	25	ton	22	25	28
	Tipping weight for second last stage, up to 38°				Tipping weight for 2nd last stage, up to 43°		
Tipping weight	26	33	37	ton	30	34	37

HYVA CYLINDER

714 37 973

type UME 191-6-3820-K345-60-3/4"-H65-HC

page # 2 / 2



Spare part list

Pos	Part no.	Description	Qty.
1	73508900	BASE 214-0752-N0263	1
2	01226840	O-RING 208 X 4 NBR 70 SHORE A	1
3	73101060	THREADED BOTTOM UM 214	1
4	01792571	LOCKING SCREW M6X12 INT. HEX. DIN 916	1
5	73103002	OIL INLET ADAPTOR UM 3/4"OT+O-RING	1
21	73607901	STAGE 191-0752-HC	1
22	71807191 K	SLIDER FL 191	1
23	71813191 K	LIFTRING FL 191x5	1
31	73606901	STAGE 169-0752-HC	1
32	71807169 K	SLIDER FL 169	1
33	71813169 K	LIFTRING FL 169x5	1
41	73605901	STAGE 149-0752-HC	1
42	71807149 K	SLIDER FL 149	1
43	71812149 K	LIFTRING FL 149/HP 150	1
51	73604901	STAGE 129-0752-HC	1
52	71807129 K	SLIDER FL 129/GF 129 (2 X 1/2)	1
53	71812129 K	LIFTRING FL 129/HP 129	1

Spare part list

Pos	Part no.	Description	Qty.
61	73603901	STAGE 110-0752-HC	1
62	71807110 K	SLIDER FL 110/GF 110 (2 X 1/2)	1
63	71812110 K	LIFTRING FL 110	1
101	73432903	PISTON E 091-0752-HC	1
102	71807091 K	SLIDER FL 091 (2 X 1/2)	1

Seal kit complete

Part no.	Description
719 04 761K	Complete packset: Consists of all packsets with packset grease and o-ring.