

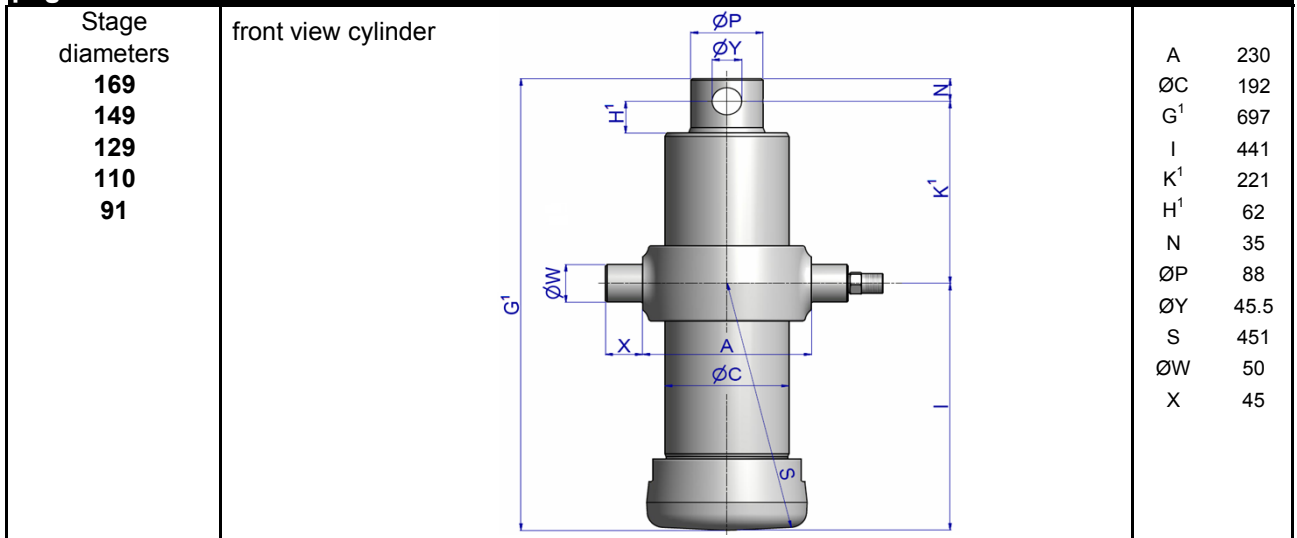
# HYVA CYLINDER

714 36 653



type: UME 169-5-2280-K221-50-3/4"-H45-HC  
tipping weight: 21-32 ton

page # 1 / 1



<sup>1</sup>including 20 mm pull-out [tol. -5; +30 mm]

<sup>2</sup>cylinder is delivered including oil inlet swivel adapter

## specifications

total stroke <sup>1</sup>	2280 mm
dry weight cylinder only	107 kg
total volume	34.0 L
working volume	31.4 L
maximum pressure	220 bar
maximum pump flow	98 l/min
maximum allowable thrust first stage <sup>3</sup>	25.0 ton
oil inlet	3/4" BSP

## technical notes

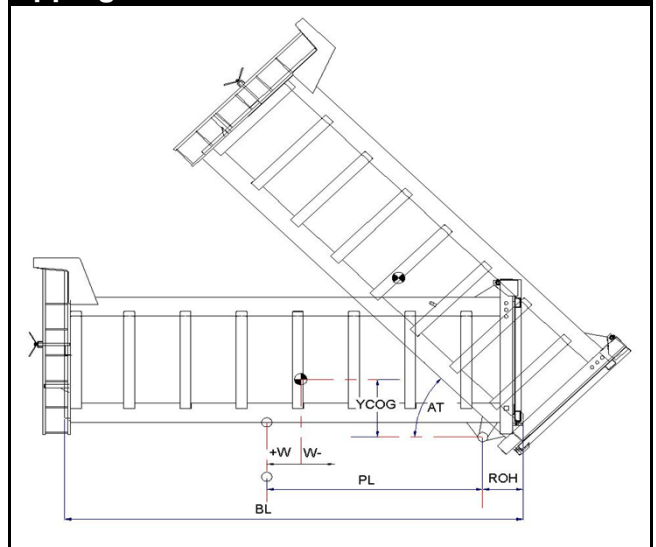
This cylinder is a lifting device only and may not be used as a structural member or be subjected to side load. Sideload and/or poor alignment might result in cylinder leakage. Hyva therefore strongly recommends the use of a cradle, even in instances where the cylinder only tips to the rear or to the side. The cylinder is painted black RAL9005.

For suitable hydraulic oils, please refer to data sheet OIL-0011. For details of available brackets and cradles, please refer data sheet 015BRA06.

Detailed calculations can be made using the HYVA Tipper Program, freely available from [tipper.hyva.com](http://tipper.hyva.com).

<sup>3</sup>The cylinder thrust on the first stage (from the HYVA Tipper Program) must not exceed the maximum allowable (see specifications above).

## tipping view



## tipping weight

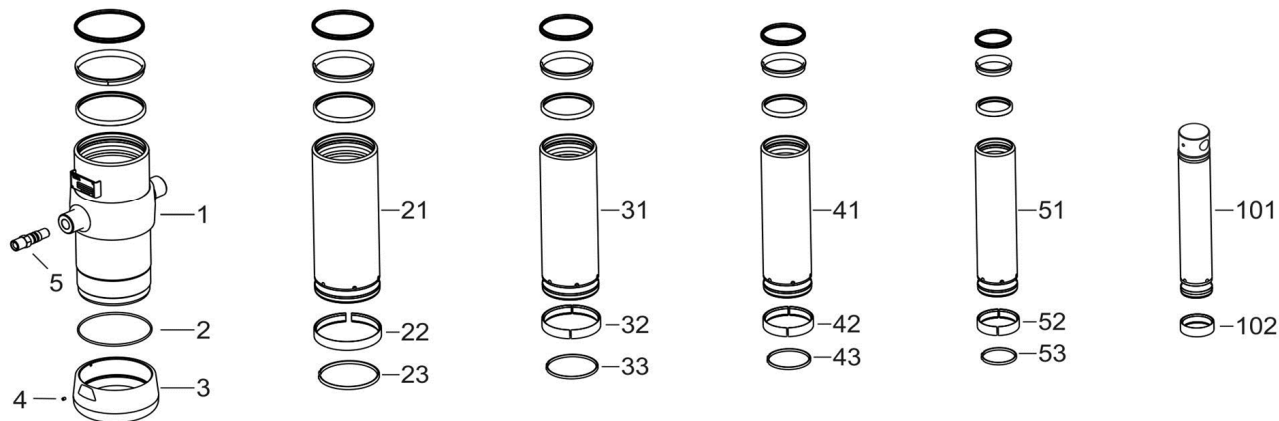
AT	46			deg	52		
PL	2970			mm	2630		
YCOG	700			mm	700		
ROH	700			mm	700		
BL	7340	6670	6120	mm	6660	6050	5550
CYL w.r.t. COG (W)	0	330	610	mm	0	300	560
Tipping weight for full stroke of 46°				Tipping weight for full stroke of 52°			
Tipping weight	21	24	28	ton	23	27	32
Tipping weight for second last stage, up to 37°				Tipping weight for 2nd last stage, up to 42°			
Tipping weight	25	28	31	ton	25	28	32

# HYVA CYLINDER

714 36 653

type UME 169-5-2280-K221-50-3/4"-H45-HC

page # 2 / 2



## Spare part list

Pos	Part no.	Description	Qty.
1	73507700	BASE 191-0572-N0159	1
2	01226780	O-RING 184 X 4 70 SHORE	1
3	73101050	THREADED BOTTOM UM 191	1
4	01792571	LOCKING SCREW M6X12 INT. HEX. DIN 916	1
5	73103002	OIL INLET ADAPTOR UM 3/4"OT+O-RING	1
21	73606701	STAGE 169-0572-HC	1
22	71807169 K	SLIDER FL 169	1
23	71813169 K	LIFTRING FL 169x5	1
31	73605701	STAGE 149-0572-HC	1
32	71807149 K	SLIDER FL 149	1
33	71812149 K	LIFTRING FL 149/HP 150	1
41	73604701	STAGE 129-0572-HC	1
42	71807129 K	SLIDER FL 129/GF 129 (2 X 1/2)	1
43	71812129 K	LIFTRING FL 129/HP 129	1
51	73603701	STAGE 110-0572-HC	1
52	71807110 K	SLIDER FL 110/GF 110 (2 X 1/2)	1
53	71812110 K	LIFTRING FL 110	1

## Spare part list

Pos	Part no.	Description	Qty.
101	73432705	PISTON E 091-0572-H45-HC	1
102	71807091 K	SLIDER FL 091 (2 X 1/2)	1

## Seal kit complete

Part no.	Description
719 04 651K	Complete packset: Consists of all packsets with packset grease and o-ring.