

HYVA CYLINDER

714 37 911



type: UME 191-5-3180-K345-60-3/4"-H65-HC

tipping weight: 29-40 ton

page # 1 / 1

Stage diameters	front view cylinder		A	245
191			ØC	215
169			G¹	910
149			I	520
129			K¹	345
110		H¹	82	
		N	45	
		ØP	107	
		ØY	65.5	
		S	531	
		ØW	60	
		X	45	

¹including 20 mm pull-out [tol. -5; +30 mm]

²cylinder is delivered including oil inlet swivel adapter

specifications

total stroke ¹	3180 mm
dry weight cylinder only	164 kg
total volume	62.3 L
working volume	57.9 L
maximum pressure	220 bar
maximum pump flow	143 l/min
maximum allowable thrust first stage ³	32.0 ton
oil inlet	3/4" BSP

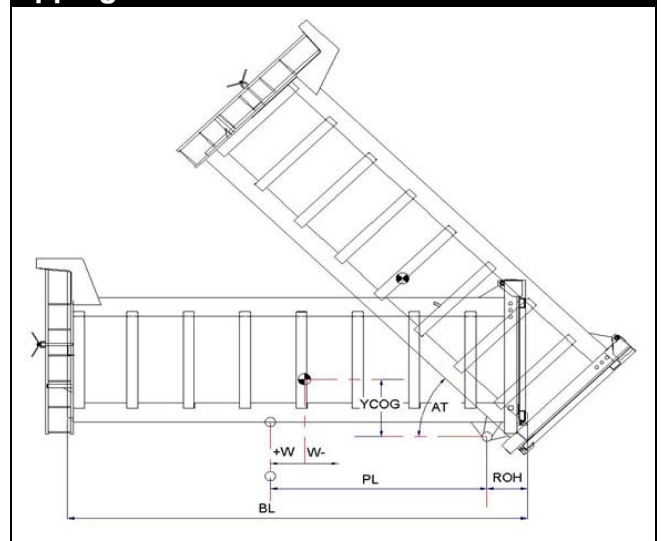
technical notes

This cylinder is a lifting device only and may not be used as a structural member or be subjected to side load. Sideload and/or poor alignment might result in cylinder leakage. Hyva therefore strongly recommends the use of a cradle, even in instances where the cylinder only tips to the rear or to the side. The cylinder is painted black RAL9005. For suitable hydraulic oils, please refer to data sheet OIL-0011. For details of available brackets and cradles, please refer data sheet 015BRA06.

Detailed calculations can be made using the HYVA Tipper Program, freely available from tipper.hyva.com.

³The cylinder thrust on the first stage (from the HYVA Tipper Program) must not exceed the maximum allowable (see specifications above).

tipping view



tipping weight

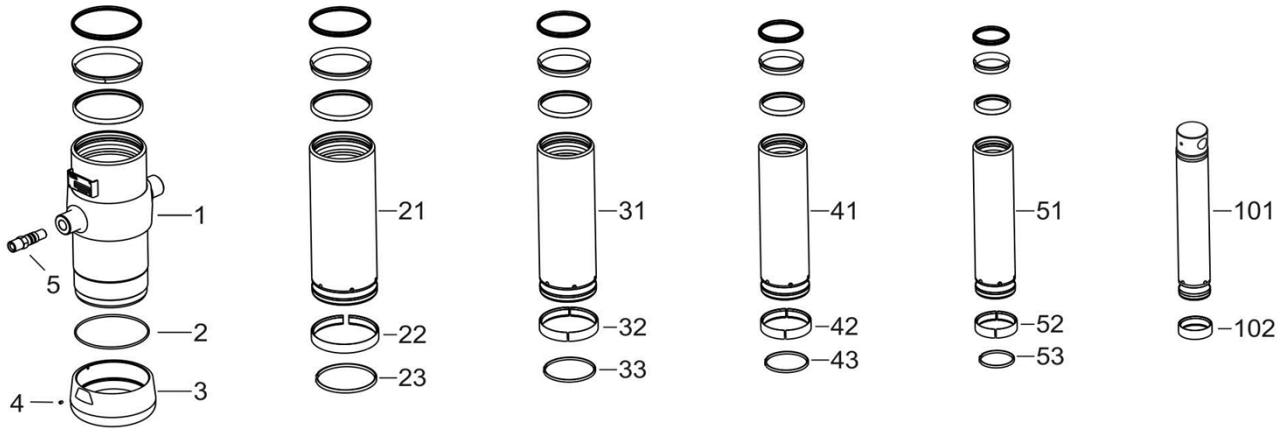
AT	46	deg	52
PL	4150	mm	3670
YCOG	700	mm	700
ROH	700	mm	700
BL	9700	mm	8740
	8820	mm	7950
	8080	mm	7280
CYL w.r.t. COG (W)	0	mm	0
	440	mm	400
	810	mm	730
Tipping weight for full stroke of 46°			
Tipping weight	29	ton	31
	33	ton	36
	37	ton	40
Tipping weight for second last stage, up to 37°			
Tipping weight	32	ton	32
	36	ton	36
	40	ton	40
Tipping weight for full stroke of 52°			
Tipping weight	31	ton	31
	36	ton	36
	40	ton	40
Tipping weight for 2nd last stage, up to 42°			
Tipping weight	32	ton	32
	36	ton	36
	40	ton	40

HYVA CYLINDER

714 37 911

type UME 191-5-3180-K345-60-3/4"-H65-HC

page # 2 / 2



Spare part list

Pos	Part no.	Description	Qty.
1	73508900	BASE 214-0752-N0263	1
2	01226840	O-RING 208 X 4 70 SHORE	1
3	73101060	THREADED BOTTOM UM 214	1
4	01792571	LOCKING SCREW M6X12 INT. HEX. DIN 916	1
5	73103002	OIL INLET ADAPTOR UM 3/4"OT+O-RING	1
21	73607901	STAGE 191-0752-HC	1
22	71807191 K	SLIDER FL 191	1
23	71813191 K	LIFTRING FL 191x5	1
31	73606901	STAGE 169-0752-HC	1
32	71807169 K	SLIDER FL 169	1
33	71813169 K	LIFTRING FL 169x5	1
41	73605901	STAGE 149-0752-HC	1
42	71807149 K	SLIDER FL 149	1
43	71812149 K	LIFTRING FL 149/HP 150	1
51	73604901	STAGE 129-0752-HC	1
52	71807129 K	SLIDER FL 129/GF 129 (2 X 1/2)	1
53	71812129 K	LIFTRING FL 129/HP 129	1

Spare part list

Pos	Part no.	Description	Qty.
101	73433903	PISTON E 110-0814-H65-HC	1
102	71807110 K	SLIDER FL 110/GF 110 (2 X 1/2)	1

Seal kit complete

Part no.	Description
719 04 751K	Complete packset: Consists of all packsets with packset grease and o-ring.