

# HYVA CYLINDER

714 37 995



type: UME 191-6-4030-K345-60-3/4"-HC

tipping weight: 20-37 ton

page # 1 / 1

Stage diameters	front view cylinder		A	245
191			ØC	215
169			G¹	1020
149			I	630
129			K¹	345
110			H¹	82
91		N	45	
		ØP	107	
		ØY	65.5	
		S	639	
		ØW	60	
		X	45	

<sup>1</sup>including 20 mm pull-out [tol. -5; +30 mm]

<sup>2</sup>cylinder is delivered including oil inlet swivel adapter

## specifications

total stroke <sup>1</sup>	4030 mm
dry weight cylinder only	193 kg
total volume	70.6 L
working volume	65.6 L
maximum pressure	220 bar
maximum pump flow	98 l/min
maximum allowable thrust first stage <sup>3</sup>	30.0 ton
oil inlet	3/4" BSP

## technical notes

This cylinder is a lifting device only and may not be used as a structural member or be subjected to side load. Sideload and/or poor alignment might result in cylinder leakage.

Hyva therefore strongly recommends the use of a cradle, even in instances where the cylinder only tips to the rear or to the side. The cylinder is painted black RAL9005.

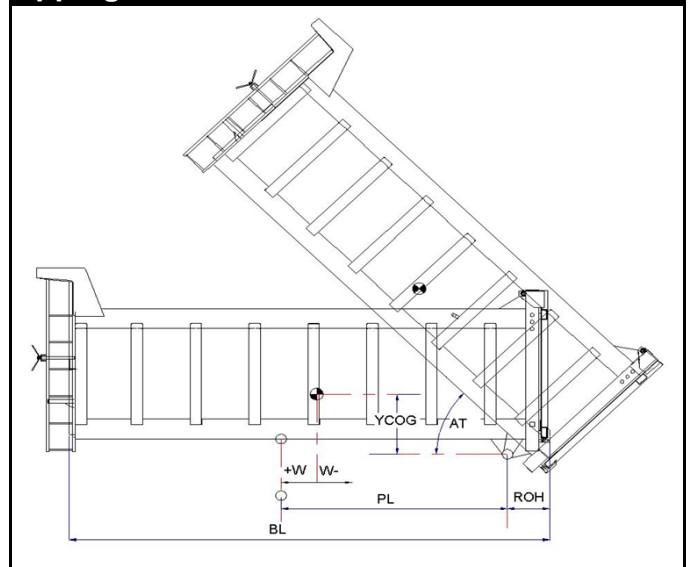
For suitable hydraulic oils, please refer to data sheet OIL-0011. For details of available brackets and cradles, please refer data sheet 015BRA06.

Detailed calculations can be made using the HYVA Tipper Program, freely available from [tipper.hyva.com](http://tipper.hyva.com).

<sup>3</sup>The cylinder thrust on the first stage (from the HYVA

Tipper Program) must not exceed the maximum allowable (see specifications above).

## tipping view



## tipping weight

PL	5260			mm	4650		
YCOG	700			mm	700		
ROH	700			mm	700		
BL	11920	10840	9930	mm	10700	9730	8920
CYL w.r.t. COG (W)	0	540	990	mm	0	490	890
	Tipping weight for full stroke of 46°				Tipping weight for full stroke of 52°		
Tipping weight	20	22	25	ton	21	24	27
	Tipping weight for second last stage, up to 38°				Tipping weight for 2nd last stage, up to 43°		
Tipping weight	26	32	36	ton	30	34	37

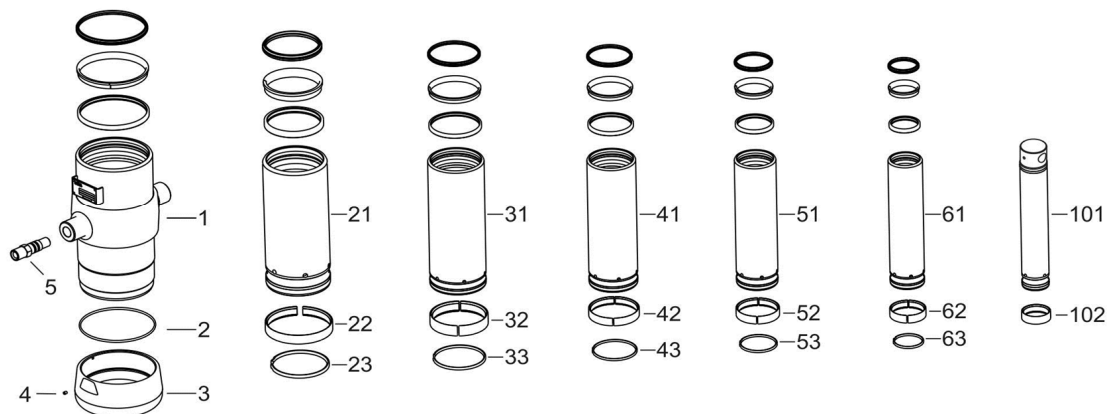
# HYVA CYLINDER

714 37 995

type

UME 191-6-4030-K345-60-3/4"-HC

page # 2 / 2



## Spare part list

Pos	Part no.	Description	Qty.
1	73508950	BASE 214-0862-N0263	1
2	01226840	O-RING 208 X 4 NBR 70 SHORE A	1
3	73101060	THREADED BOTTOM UM 214	1
4	01792571	LOCKING SCREW M6X12 INT. HEX. DIN 916	1
5	73103002	OIL INLET ADAPTOR UM 3/4"OT+O-RING	1
21	73607951	STAGE 191-0862-HC	1
22	71807191 K	SLIDER FL 191	1
23	71813191 K	LIFTRING FL 191x5	1
31	73606951	STAGE 169-0862-HC	1
32	71807169 K	SLIDER FL 169	1
33	71813169 K	LIFTRING FL 169x5	1
41	73605951	STAGE 149-0862-HC	1
42	71807149 K	SLIDER FL 149	1
43	71812149 K	LIFTRING FL 149/HP 150	1
51	73604951	STAGE 129-0862-HC	1
52	71807129 K	SLIDER FL 129/GF 129 (2 X 1/2)	1
53	71812129 K	LIFTRING FL 129/HP 129	1

## Spare part list

Pos	Part no.	Description	Qty.
61	73603951	STAGE 110-0862-HC	1
62	71807110 K	SLIDER FL 110/GF 110 (2 X 1/2)	1
63	71812110 K	LIFTRING FL 110	1
101	73432953	PISTON E 091-0862-HC (SR=450)	1
102	71807091 K	SLIDER FL 091 (2 X 1/2)	2

## Seal kit complete

Part no.	Description
719 04 761K	Complete packset: Consists of all packsets with packset grease and o-ring.