

HYVA CYLINDER

714 34 389



type: UME 129-3-1360-K221-45-1/2"-HC

tipping weight: 15-20 ton

page # 1 / 1

Stage diameters 129 110 91	front view cylinder		A 175 ØC 150 G ¹ 688 I 437 K ¹ 221 H ¹ 62 N 30 ØP 88 ØY 35.5 S 443 ØW 45 X 45
--	---------------------	--	---

¹including 20 mm pull-out [tol. -5; +30 mm]

²cylinder is delivered including oil inlet swivel adapter

specifications

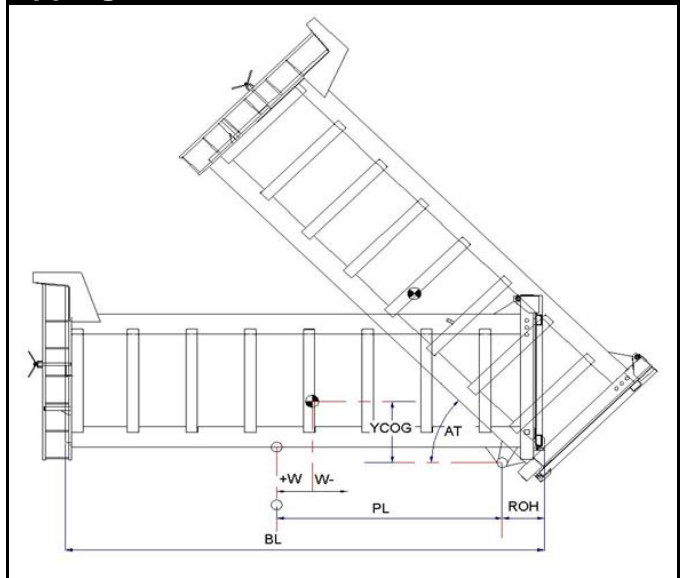
total stroke ¹	1360 mm
dry weight cylinder only	62 kg
total volume	14.4 L
working volume	13.2 L
maximum pressure	220 bar
maximum pump flow	98 l/min
maximum allowable thrust first stage ³	17.5 ton
oil inlet	1/2" BSP

technical notes

This cylinder is a lifting device only and may not be used as a structural member or be subjected to side load. Sideload and/or poor alignment might result in cylinder leakage. Hyva therefore strongly recommends the use of a cradle, even in instances where the cylinder only tips to the rear or to the side. The cylinder is painted black RAL9005. For suitable hydraulic oils, please refer to data sheet OIL-0011. For details of available brackets and cradles, please refer data sheet 015BRA06. Detailed calculations can be made using the HYVA Tipper Program, freely available from tipper.hyva.com.

³The cylinder thrust on the first stage (from the HYVA Tipper Program) must not exceed the maximum allowable (see specifications above).

tipping view



tipping weight

PL	1770	mm	1570				
YCOG	500	mm	500				
ROH	500	mm	500				
BL	5040	4540	4130	mm	4600	4140	3760
CYL w.r.t. COG (W)	-250	0	210	mm	-230	0	190
Tipping weight for full stroke of 46°				Tipping weight for full stroke of 52°			
Tipping weight	15	18	20	ton	15	18	20
Tipping weight for second last stage, up to 31°				Tipping weight for 2nd last stage, up to 35°			
Tipping weight	15	18	20	ton	15	18	20

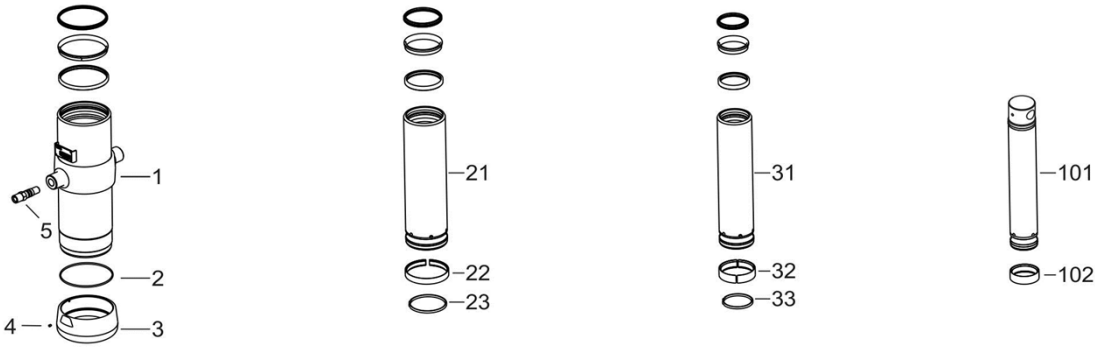
HYVA CYLINDER

714 34 389

type

UME 129-3-1360-K221-45-1/2"-HC

page # 2 / 2



Spare part list

Pos	Part no.	Description	Qty.
1	73505702	BASE 149-0572-N0159	1
2	01226680	O-RING 145 X 4 70 SHORE	1
3	73101030	THREADED BOTTOM UM 149	1
4	01792571	LOCKING SCREW M6X12 INT. HEX. DIN 916	1
5	73103000	OIL INLET ADAPTOR UM 1/2"OT+O-RING	1
21	73604701	STAGE 129-0572-HC	1
22	71807129 K	SLIDER FL 129/GF 129 (2 X 1/2)	1
23	71812129 K	LIFTRING FL 129/HP 129	1
31	73603701	STAGE 110-0572-HC	1
32	71807110 K	SLIDER FL 110/GF 110 (2 X 1/2)	1
33	71812110 K	LIFTRING FL 110	1

Spare part list

Pos	Part no.	Description	Qty.
101	73432703	PISTON E 091-0614-HC	1
102	71807091 K	SLIDER FL 091 (2 X 1/2)	1

Seal kit complete

Part no.	Description
719 04 431K	Complete packset: Consists of all packsets with packset grease and o-ring.