

HYVA CYLINDER

714 36 539



type: UME 169-5-1880-K221-50-3/4"-H45-HC
tipping weight: 18-28 ton

page # 1 / 1

Stage diameters 169 149 129 110 91	front view cylinder		<table border="1"> <tr><td>A</td><td>230</td></tr> <tr><td>ØC</td><td>192</td></tr> <tr><td>G¹</td><td>603</td></tr> <tr><td>I</td><td>347</td></tr> <tr><td>K¹</td><td>221</td></tr> <tr><td>H¹</td><td>62</td></tr> <tr><td>N</td><td>35</td></tr> <tr><td>ØP</td><td>88</td></tr> <tr><td>ØY</td><td>45.5</td></tr> <tr><td>S</td><td>360</td></tr> <tr><td>ØW</td><td>50</td></tr> <tr><td>X</td><td>45</td></tr> </table>	A	230	ØC	192	G¹	603	I	347	K¹	221	H¹	62	N	35	ØP	88	ØY	45.5	S	360	ØW	50	X	45
A	230																										
ØC	192																										
G¹	603																										
I	347																										
K¹	221																										
H¹	62																										
N	35																										
ØP	88																										
ØY	45.5																										
S	360																										
ØW	50																										
X	45																										

¹including 20 mm pull-out [tol. -5; +30 mm]

²cylinder is delivered including oil inlet swivel adapter

specifications

total stroke ¹	1880 mm
dry weight cylinder only	93 kg
total volume	28.1 L
working volume	25.9 L
maximum pressure	220 bar
maximum pump flow	98 l/min
maximum allowable thrust first stage ³	25.0 ton
oil inlet	3/4" BSP

technical notes

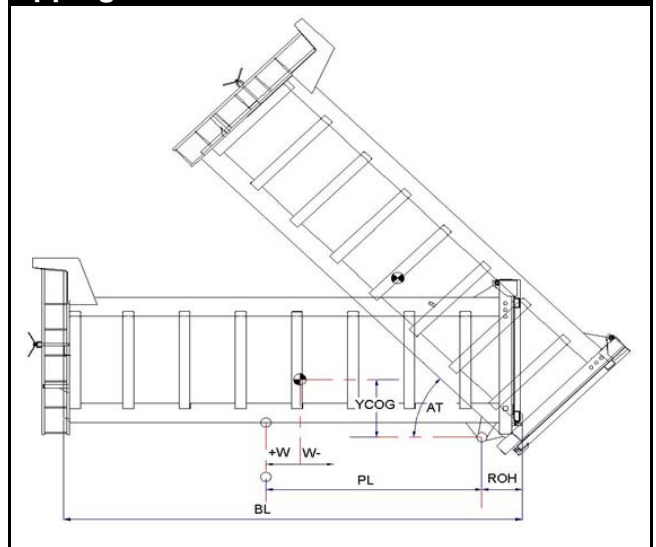
This cylinder is a lifting device only and may not be used as a structural member or be subjected to side load. Sideload and/or poor alignment might result in cylinder leakage. Hyva therefore strongly recommends the use of a cradle, even in instances where the cylinder only tips to the rear or to the side. The cylinder is painted black RAL9005.

For suitable hydraulic oils, please refer to data sheet OIL-0011. For details of available brackets and cradles, please refer data sheet 015BRA06.

Detailed calculations can be made using the HYVA Tipper Program, freely available from tipper.hyva.com.

³The cylinder thrust on the first stage (from the HYVA Tipper Program) must not exceed the maximum allowable (see specifications above).

tipping view



tipping weight

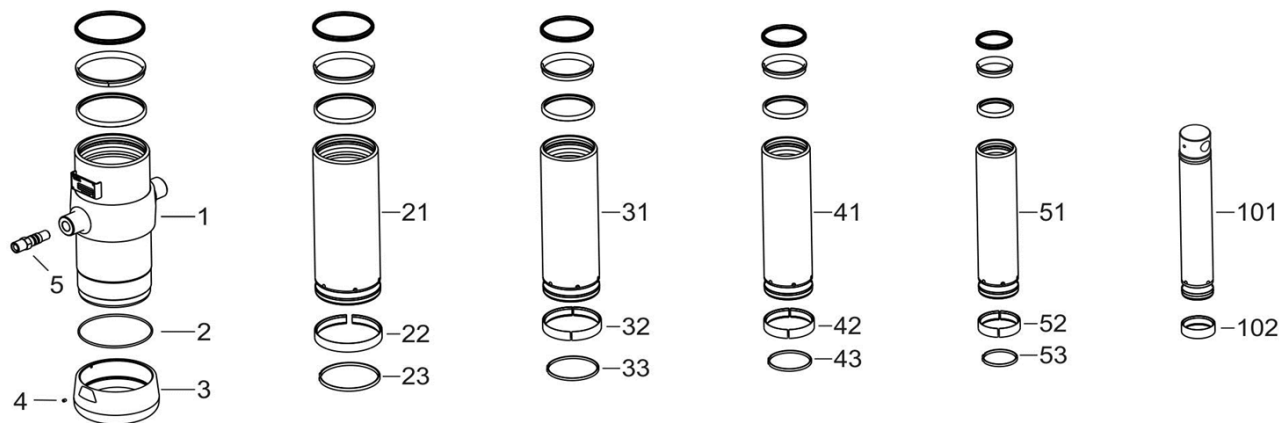
AT	46			deg	52		
PL	2450			mm	2170		
YCOG	700			mm	700		
ROH	700			mm	700		
BL	7000	6300	5730	mm	6380	5740	5220
CYL w.r.t. COG (W)	-350	0	290	mm	-320	0	260
	Tipping weight for full stroke of 46°				Tipping weight for full stroke of 52°		
Tipping weight	18	22	26	ton	20	24	28
	Tipping weight for second last stage, up to 37°				Tipping weight for 2nd last stage, up to 42°		
Tipping weight	22	25	28	ton	22	25	28

HYVA CYLINDER

714 36 539

type UME 169-5-1880-K221-50-3/4"-H45-HC

page # 2 / 2



Spare part list

Pos	Part no.	Description	Qty.
1	73507500	BASE 191-0478-N0159	1
2	01226780	O-RING 184 X 4 70 SHORE	1
3	73101050	THREADED BOTTOM UM 191	1
4	01792571	LOCKING SCREW M6X12 INT. HEX. DIN 916	1
5	73103002	OIL INLET ADAPTOR UM 3/4"OT+O-RING	1
21	73606501	STAGE 169-0478-HC	1
22	71807169 K	SLIDER FL 169	1
23	71813169 K	LIFTRING FL 169x5	1
31	73605501	STAGE 149-0478-HC	1
32	71807149 K	SLIDER FL 149	1
33	71812149 K	LIFTRING FL 149/HP 150	1
41	73604501	STAGE 129-0478-HC	1
42	71807129 K	SLIDER FL 129/GF 129 (2 X 1/2)	1
43	71812129 K	LIFTRING FL 129/HP 129	1
51	73603501	STAGE 110-0478-HC	1
52	71807110 K	SLIDER FL 110/GF 110 (2 X 1/2)	1
53	71812110 K	LIFTRING FL 110	1

Spare part list

Pos	Part no.	Description	Qty.
101	73432503	PISTON E 091-0478-H45-HC	1
102	71807091 K	SLIDER FL 091 (2 X 1/2)	1

Seal kit complete

Part no.	Description
719 04 650K	Complete packset: Consists of all packsets with packset grease and o-ring.