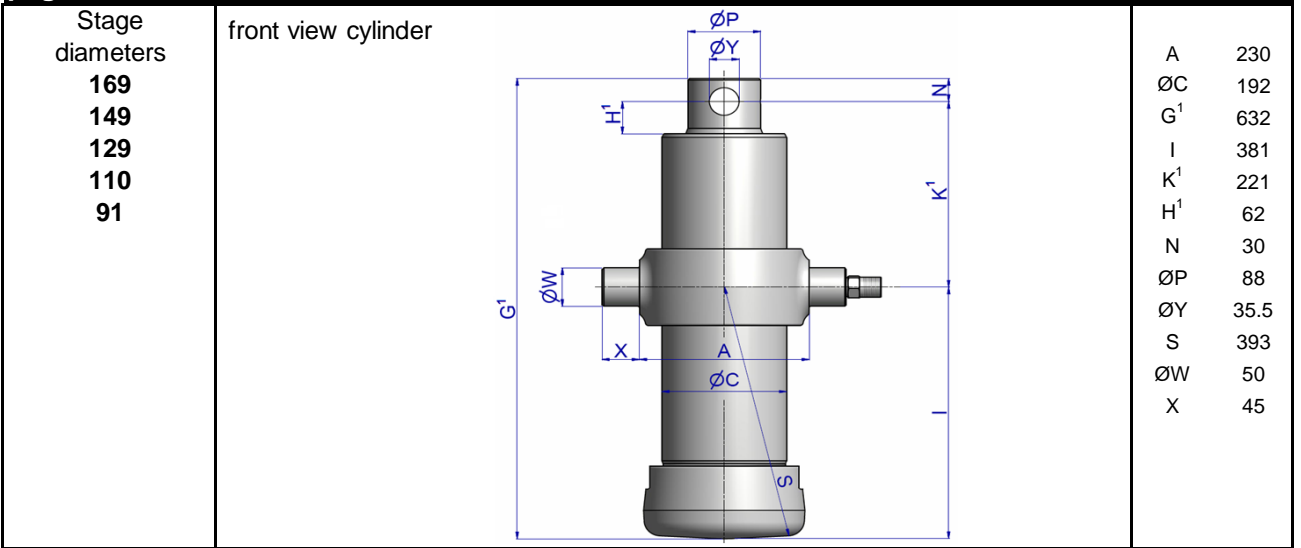


# HYVA CYLINDER

714 36 567



type: **UME 169-5-1980-K221-50-3/4"-HC**  
 tipping weight: **18-28 ton**  
 page # 1 / 1



<sup>1</sup>including 20 mm pull-out [tol. -5; +30 mm]

<sup>2</sup>cylinder is delivered including oil inlet swivel adapter

## specifications

total stroke <sup>1</sup>	1980 mm
dry weight cylinder only	98 kg
total volume	29.5 L
working volume	27.3 L
maximum pressure	220 bar
maximum pump flow	98 l/min
maximum allowable thrust first stage <sup>3</sup>	25.0 ton
oil inlet	3/4" BSP

## technical notes

This cylinder is a lifting device only and may not be used as a structural member or be subjected to side load. Sideload and/or poor alignment might result in cylinder leakage.

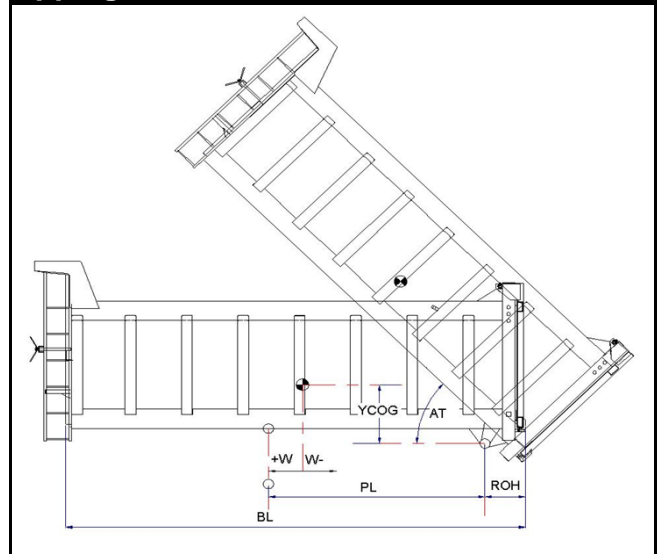
Hyva therefore strongly recommends the use of a cradle, even in instances where the cylinder only tips to the rear or to the side. The cylinder is painted black RAL9005.

For suitable hydraulic oils, please refer to data sheet OIL-0011. For details of available brackets and cradles, please refer data sheet 015BRA06.

Detailed calculations can be made using the HYVA Tipper Program, freely available from [tipper.hyva.com](http://tipper.hyva.com).

<sup>3</sup>The cylinder thrust on the first stage (from the HYVA Tipper Program) must not exceed the maximum allowable (see specifications above).

## tipping view



## tipping weight

AT	46	deg	52
PL	2580	mm	2280
YCOG	700	mm	700
ROH	700	mm	700
BL	7290	mm	6620
	6560	mm	5960
	5960	mm	5420
CYL w.r.t. COG (W)	-360	mm	-330
	0	mm	0
	300	mm	270
Tipping weight for full stroke of 46°			
Tipping weight for full stroke of 52°			
Tipping weight	18	ton	20
	22	ton	24
	25	ton	28
Tipping weight for second last stage, up to 37°			
Tipping weight for 2nd last stage, up to 42°			
Tipping weight	22	ton	22
	25	ton	25
	28	ton	28

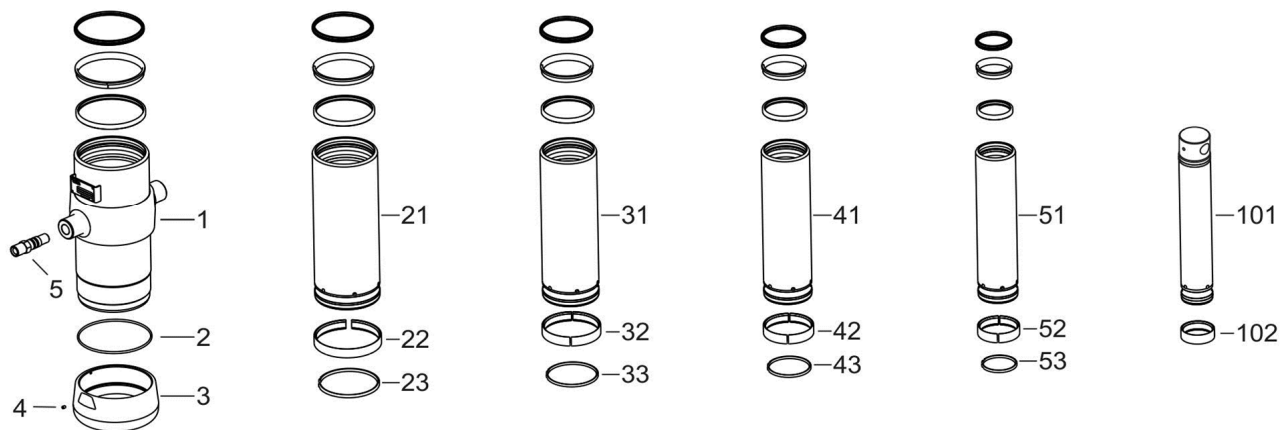
# HYVA CYLINDER

714 36 567

type

UME 169-5-1980-K221-50-3/4~HC

page # 2 / 2



## Spare part list

Pos	Part no.	Description	Qty.
1	73507600	BASE 191-0512-N0159	1
2	01226780	O-RING 184 X 4 70 SHORE	1
3	73101050	THREADED BOTTOM UM 191	1
4	01792571	LOCKING SCREW M6X12 INT. HEX. DIN 916	1
5	73103002	OIL INLET ADAPTOR UM 3/4"OT+O-RING	1
21	73606551	STAGE 169-0512-HC	1
22	71807169 K	SLIDER FL 169	1
23	71813169 K	LIFTRING FL 169x5	1
31	73605551	STAGE 149-0512-HC	1
32	71807149 K	SLIDER FL 149	1
33	71812149 K	LIFTRING FL 149/HP 150	1
41	73604551	STAGE 129-0512-HC	1
42	71807129 K	SLIDER FL 129/GF 129 (2 X 1/2)	1
43	71812129 K	LIFTRING FL 129/HP 129	1
51	73603551	STAGE 110-0512-HC	1
52	71807110 K	SLIDER FL 110/GF 110 (2 X 1/2)	1
53	71812110 K	LIFTRING FL 110	1

## Spare part list

Pos	Part no.	Description	Qty.
101	73432601	PISTON E 091-0554-HC	1
102	71807091 K	SLIDER FL 091 (2 X 1/2)	1

## Seal kit complete

Part no.	Description
719 04 651K	Complete packset: Consists of all packsets with packset grease and o-ring.