

HYVA CYLINDER

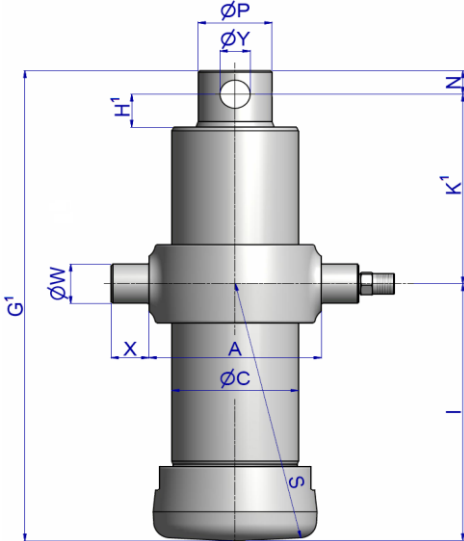
714 36 727



type: UME 169-4-2540-K231-50-3/4"-HC

tipping weight: 25-32 ton

page # 1 / 1

Stage diameters 169 149 129 110	front view cylinder		A 230 ØC 192 G ¹ 887 I 621 K ¹ 231 H ¹ 72 N 35 ØP 107 ØY 45.5 S 628 ØW 50 X 45
---	---------------------	--	--

¹including 20 mm pull-out [tol. -5; +30 mm]

²cylinder is delivered including oil inlet swivel adapter

specifications

total stroke ¹	2540 mm
dry weight cylinder only	125 kg
total volume	42.8 L
working volume	39.7 L
maximum pressure	220 bar
maximum pump flow	143 l/min
maximum allowable thrust first stage ³	25.0 ton
oil inlet	3/4" BSP

technical notes

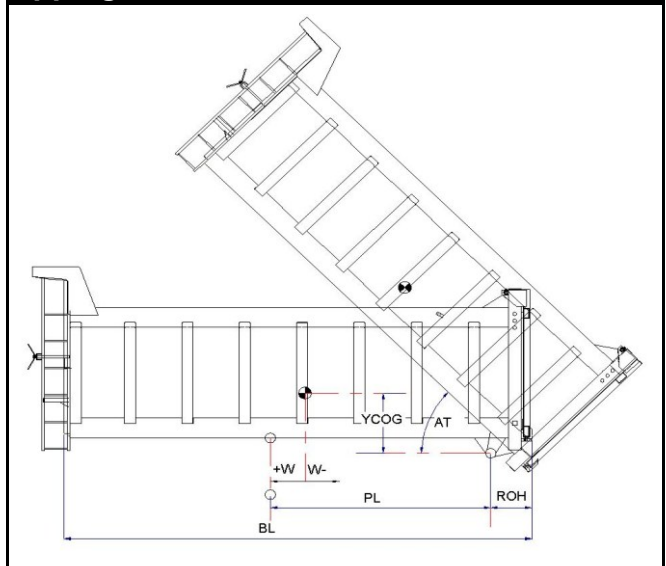
This cylinder is a lifting device only and may not be used as a structural member or be subjected to side load. Sideload and/or poor alignment might result in cylinder leakage. Hyva therefore strongly recommends the use of a cradle, even in instances where the cylinder only tips to the rear or to the side. The cylinder is painted black RAL9005.

For suitable hydraulic oils, please refer to data sheet OIL-0011. For details of available brackets and cradles, please refer data sheet 015BRA06.

Detailed calculations can be made using the HYVA Tipper Program, freely available from tipper.hyva.com.

³The cylinder thrust on the first stage (from the HYVA Tipper Program) must not exceed the maximum allowable (see specifications above).

tipping view



tipping weight

AT	46			deg	52		
PL	3310			mm	2930		
YCOG	700			mm	700		
ROH	700			mm	700		
BL	8020	7290	6680	mm	7260	6600	6050
CYL w.r.t. COG (W)	0	360	670	mm	0	330	610
	Tipping weight for full stroke of 46°				Tipping weight for full stroke of 52°		
Tipping weight	25	28	31	ton	25	28	32
	Tipping weight for second last stage, up to 35°				Tipping weight for 2nd last stage, up to 39°		
Tipping weight	25	28	31	ton	25	28	32

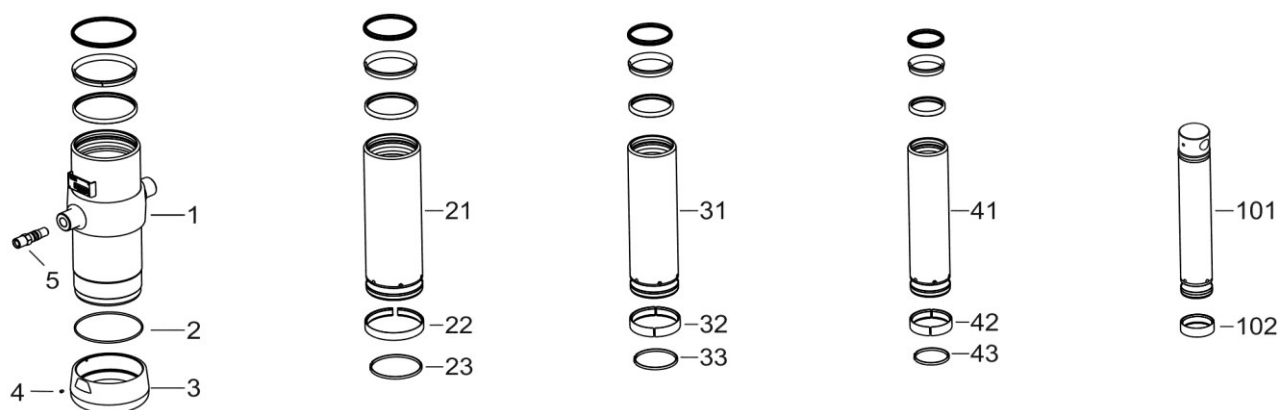
HYVA CYLINDER

714 36 727

type

UME 169-4-2540-K231-50-3/4"-HC

page # 2 / 2



Spare part list

Pos	Part no.	Description	Qty.
1	73507900	BASE 191-0752-N0159	1
2	01226780	O-RING 184 X 4 70 SHORE	1
3	73101050	THREADED BOTTOM UM 191	1
4	01792571	LOCKING SCREW M6X12 INT. HEX. DIN 916	1
5	73103002	OIL INLET ADAPTOR UM 3/4"OT+O-RING	1
21	73606901	STAGE 169-0752-HC	1
22	71807169 K	SLIDER FL 169	1
23	71813169 K	LIFTRING FL 169x5	1
31	73605901	STAGE 149-0752-HC	1
32	71807149 K	SLIDER FL 149	1
33	71812149 K	LIFTRING FL 149/HP 150	1
41	73604901	STAGE 129-0752-HC	1
42	71807129 K	SLIDER FL 129/GF 129 (2 X 1/2)	1
43	71812129 K	LIFTRING FL 129/HP 129	1

Spare part list

Pos	Part no.	Description	Qty.
101	73433901	PISTON E 110-0804-HC	1
102	71807110 K	SLIDER FL 110/GF 110 (2 X 1/2)	1

Seal kit complete

Part no.	Description
719 04 641K	Complete packset: Consists of all packsets with packset grease and o-ring.